



4-DAY PYRENEES-PARIS TOUR

BOOK **NOW**

START: MEET YOUR GUIDES AT TARBES TRAIN STATION THEN TRANSFER TO CASTELNAU (45 MINS).						
DAY	REGIONS	VIEWING AREA	STAGE	RIDERS	NON-RIDERS	HOTELS
DAY 1 JULY 22	PYRENEES THEN BORDEAUX	START CASTELNAU	STAGE 19 PLAINS	MORNING RIDE 45.8 KMS (28.4 MILES) TO STAGE START. RIDING TIME 2-3 HOURS. DIFFICULTY: MODERATE	VAN TRANSFER TO STAGE VIEWING (DRIVING TIME 45 MINS). EXPLORE THE TDF VILLAGE PRE-START.	IBIS PERIGUEUX CENTRE****
				ALL: SEE THE STAGE START FROM SPYNS' VIP VIEWING AREA, COMPLETE WITH VIP TENT AND OPEN BAR. FOLLOWING THE STAGE, TRANSFER TO BORDEAUX, ARRIVING IN THE AFTERNOON. THEN CHOOSE YOUR ADVENTURE: A CITY BIKE TOUR OF HISTORIC BORDEAUX OR FRENCH PASTRY CLASS. EARLY EVENING TRANSFER TO PERIGUEX (DORDOGNE). CAUTION: LONG DAY.		
DAY 2 JULY 23	DORDOGNE PARIS	FINISH ROCAMADOUR	STAGE 20 INDIVIDUAL TIME TRIAL	OPTIONS:		HOTEL ST JAMES**** (PARIS)
				OPTION 1: FULL DAY AT TIME TRIAL WITH OPTIONAL HIKE OR GUIDED LOOP RIDE (23.2 KMS / 14.4 MILES)	OPTION 2: STRAIGHT TO PARIS. SKIP TODAY'S STAGE, STRAIGHT TO PARIS, AFTERNOON SEINE RIVER CRUISE, BISTRO DINNER.	
DAY 3 JULY 24	PARIS	FINISH	STAGE 21 PARIS FINISH	ALL: MORNING PRE-RACE RIDE (13.8 KMS / 8.6 MILES) ON THE CHAMPS ELYSEES, VIP STAGE VIEWING FROM SPYNS' BALCONY/SUITE, SEND OFF DINNER AT EIFFEL TOWER.		
DAY 4 JULY 25			DEPARTURE DAY			



4-DAY PYRENEES-PARIS TOUR

BOOK **NOW**



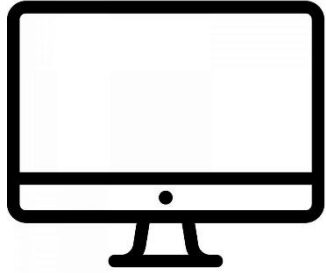
STAGES YOU WILL SEE:

STAGE	DATE	DISTANCE	TERRAIN	START/FINISH	VIEWING AREA(S)
STAGE 19	JULY 22	189 KMS	PLAINS	CASTELNAU/CAHORS	START CASTELNAU
STAGE 20	JULY 23	40 KMS	HILLS/TIME TRIAL	LACAPELLE/ROCAMADOUR	FINISH ROCAMADOUR
STAGE 21	JULY 24	112 KMS	PLAINS	PARIS/PARIS	FINISH PARIS

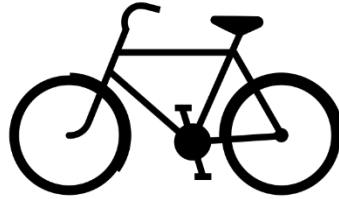


4-DAY PYRENEES-PARIS TOUR

BOOK **NOW**



TOUR WEBPAGE



RIDE DETAILS



TOUR VIDEO