



# 1-DAY “DAY AT THE RACES” PARIS FINISH

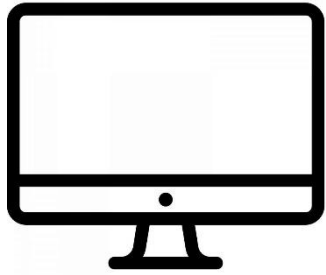
**BOOK NOW**

Please find below two (2) options for our TDF Paris finish tours. Why two (2) options you ask? Depending on the final race schedule, published every year in June, the tour may finish around 7:30 p.m. (Paris time) or it can finish as late as 9:30 p.m. (Paris time). So please find below two (2) schedules to take into account the different stage finish times.

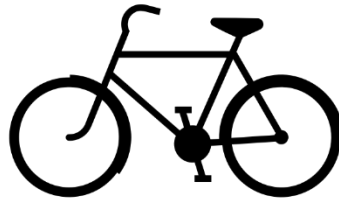
TIME	PLACE	DETAILS		INCLUDED
		OPTION 1: PARIS STAGE FINISHES BEFORE 7:30 P.M.	OPTION 2: PARIS STAGE FINISHES AFTER 7:30 P.M.	
6:00 a.m.	Westin Palace Rue de Rivoli Hotel Lobby	Early morning departure for a guided sunrise ride along the TDF racecourse. Bike around the Louvre and up the <i>Champs Elysées</i> . Multiple photo ops at the <i>Arc de Triomphe</i> , TDF finish line, and along the romantic <i>Seine</i> . Total distance: 13.1 kms / 8.1 miles		Bike + Guide
Meal Options		OPTION 1: PARIS STAGE FINISHES BEFORE 7:30 P.M. Following the stage finish, transfer to the Eiffel Tower for your final send off dinner. Eat a delectable meal at the tower's first-level restaurant, Le 58.	OPTION 2: PARIS STAGE FINISHES AFTER 7:30 P.M. Before the stage finish, Seine River cruise/lunch to see the major sights by boat. After the stage finish, optional evening excursion to visit the Eiffel Tower with guide.	+\$199/person For meals
2:30 p.m. (Time to be confirmed)	Westin Hotel Presidential Suite	Watch the race finish from our VIP suite (and balcony) from the Westin hotel's presidential suite. Enjoy live tour coverage, open bar, and unbeatable views of the pro riders as they complete a total of 9 laps, passing right under our balcony.		Unlimited access to VIP room, balcony, and open bar

# 1-DAY "DAY AT THE RACES" PARIS FINISH

BOOK **NOW**



TOUR WEBPAGE



RIDE DETAILS



TOUR VIDEO